

# Walking Tour: The Beatles and Woolton\*



1. St Peter's Church
2. St Peter's Church Hall
3. Reynolds Park
4. Strawberry Field
5. Mendips
6. Woolton Library
7. Woolton Baths
8. Woolton Picture House

## 1. St Peter's Church



John Lennon was a member of St Peter's Church and occasionally sang in the choir. On July 6 1957, John's band, The Quarrymen, performed at the Church Fete.

John's Uncle George, Eleanor Rigby and Bob Paisley are buried in the graveyard.

\* St Peter's Church would like to thank Sophie Brook, Nathan Morris, and the University of Chester, for their help in producing this leaflet

## 2. St Peter's Church Hall



St Peter's Church Hall is one of the most important places for Beatles fans visiting Woolton. This hall is where John Lennon and Paul McCartney were first formally introduced by a mutual friend, Ivan Vaughan, on July 6 1957, and could be considered the birthplace of the Beatles.

John's band, The Quarrymen, played in the hall for the Church youth club, on several occasions.

This picture shows the interior of the Church Hall as it would have appeared when John met Paul. The stage and piano, played by Paul during his audition, can be seen in the background.

(Photo courtesy of Rod Davis, © James Davis)



## 3. Reynolds Park



John Lennon played in Reynolds Park as a teenager with his gang, The Outlaws.

#### 4. Strawberry Field



Strawberry Field, a Salvation Army children's home where John Lennon played as a child, became the influence for the Beatles song Strawberry Fields Forever

#### 5. Mendips



Mendips, the family home of John Lennon, where he lived with his Auntie Mimi and Uncle George.

Mendips was subsequently bought by Yoko Ono and donated to the National Trust. It was opened to the public by the National Trust in 2003; tours may be booked by calling 0151 427 7231 or online at <http://www.nationaltrust.org.uk/beatles-childhood-homes/>

## 6. Woolton Library



Woolton Library, now sadly closed, was often visited by John as a child because of his love of books and reading.

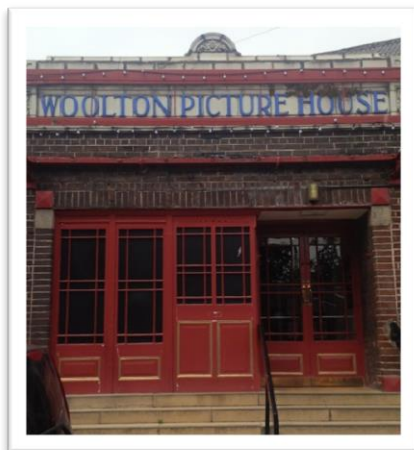
(Photo courtesy of Jackie Spencer, [www.beatleguide.com](http://www.beatleguide.com))

## 7. Woolton Baths



Both John Lennon and Paul McCartney learnt to swim at Woolton Baths as children. The old sandstone building has been a swimming pool for 120 years, and served as a fire station during the second world war. The English Heritage Grade II-listed Baths were sadly closed in 2010, but there is an active campaign to reopen the Baths once again.

## 8. Woolton Picture House



Another favourite place of John's as a child was Woolton Picture House. The Picture House was first opened in 1927 and is the oldest working cinema in Liverpool.

(Photo courtesy of Jackie Spencer, [www.beatleguide.com](http://www.beatleguide.com))